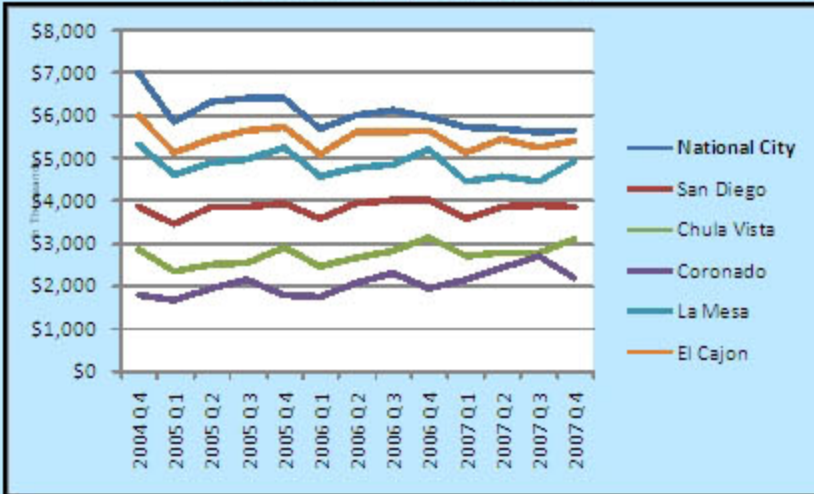


Highlights

- *4.7 miles to downtown San Diego
- *9.8 miles to Mexico border
- *Easy access to multiple freeways
- *San Diego Bay frontage

Jurisdiction Per Capita Sales



4th Quarter Sales Tax 2007	# of Businesses
\$3,494,591	2,079
New Motor Vehicle Dealers	\$1,114.2
Department Stores	252.9
Discount Dept Stores	220.0
Service Stations	208.8
Restaurants - No Alcohol	206.3
Family Apparel	165.5
Lumber/Builder Materials	163.6
Specialty Stores	149.8
Electronics/Appliance Stores	95.9
Women's Apparel	87.4
Shoe Stores	54.4
Auto Lease	50.4
Jewelry Stores	49.4
Used Automotive Dealers	47.7
Light Industrial/Printers	46.6

In thousands

FBI Index Crime per 1,000 Population

Year	Rate
1998	10.2
1999	10.3
2000	7.96
2001	8.53
2002	9.51
2003	9.11
2004	7.52
2005	7.45
2006	8.57
2007	6.94

Population 61,115	
Hispanic	59%
Asian & Pacific Isl.	17%
White	16%
Black	6%
American Indian	.02%
Other	2%

Legend

- National City
- Downtown San Diego

0 1 2 Miles

